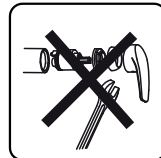
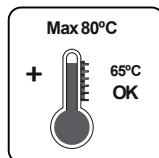
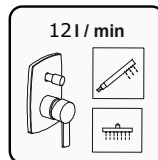
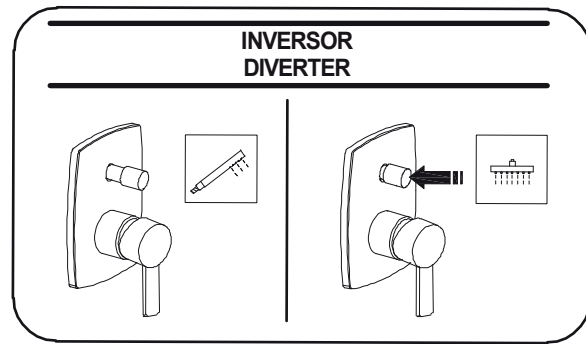


clever

G R I F E R Í A

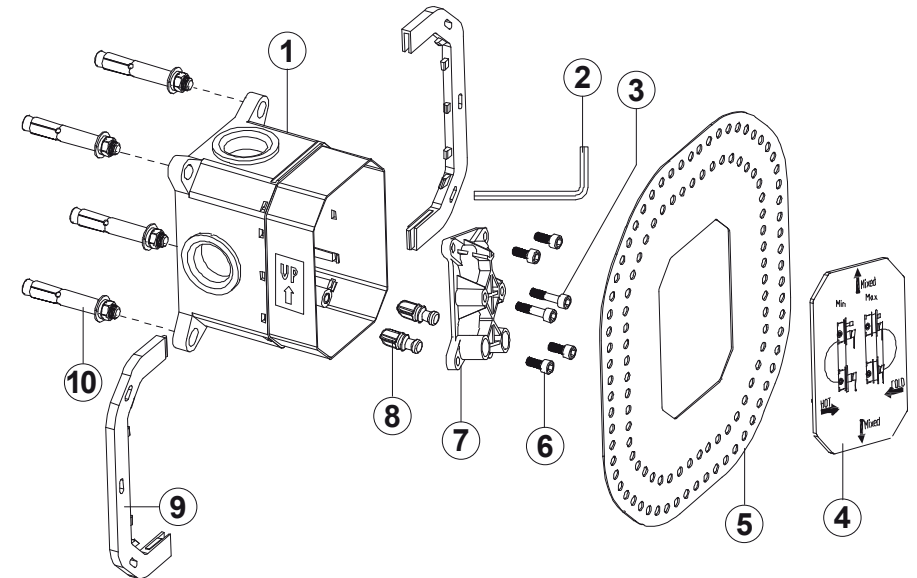


Todos los diagramas de instalación son únicamente de referencia.
All installation diagrams are only for your reference.

clever

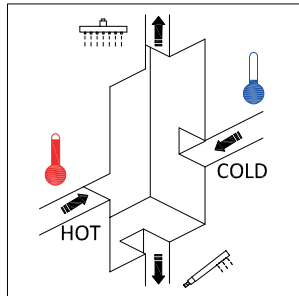
G R I F E R Í A

1. CAJA EMPOTRADA 1. CONCEALED BOX

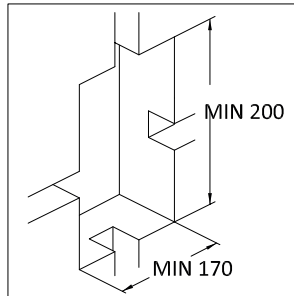


Nr.	DESCRIPCIÓN DESCRIPTION	CANT. QTY.
1	CAJA ICLEVER (4x1/2") ICLEVER BOX (4x1/2")	1
2	LLAVE HEXAGONAL ALLEN HEXAGONAL ALLEN KEY	1
3	TORNILLO ALLEN M5x45 ALLEN SCREW M5x45	2
4	PROTECCIÓN/INSTRUCCIONES PROTECTION/INSTRUCTIONS	1
5	JUNTA PARA TABIQUES RUBBER WALL SEAL	1
6	TORNILLO ALLEN M5x15 ALLEN SCREW M5x15	4
7	BLOQUE DE PURGA FLUSH BOARD	1
8	TAPÓN ESTANQUEIDAD SEALING PLUG	2
9	SOPORTES CAJA ICLEVER ICLEVER BOX SUPPORT	2
10	KIT TORNILLO EXPANSIÓN EXPANSION SCREW SET	4

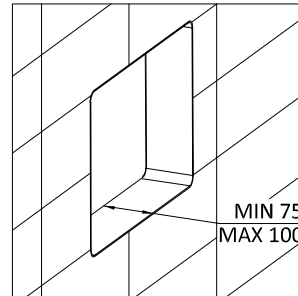
PREPARACIÓN ANTES DE LA INSTALACIÓN
PREPARATION BEFORE INSTALLATION



FUNCIONALIDAD
FUNCTIONALITY

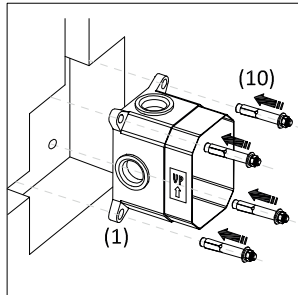


MEDIDA ALOJAMIENTO
SIZE OF THE HOLE

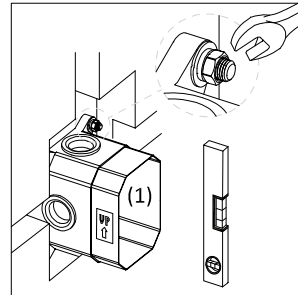


PROFUNDIDAD TOTAL ALOJAMIENTO
TOTAL DEPTH OF THE HOLE

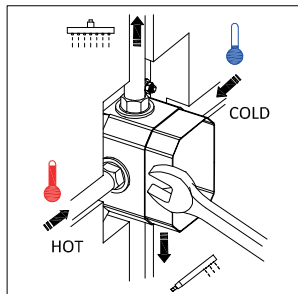
GUÍA DE INSTALACIÓN
INSTALLATION GUIDE



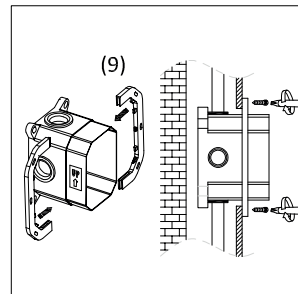
COLOCAR LOS 4 TORNILLOS EXPANSIÓN (10)
EN PARED, CON LA CAJA (1) COMO REFERENCIA
PUT THE 4 EXPANSION SCREW (10) IN THE WALL
TAKING AS REFERENCE THE ICLEVER BOX (1)



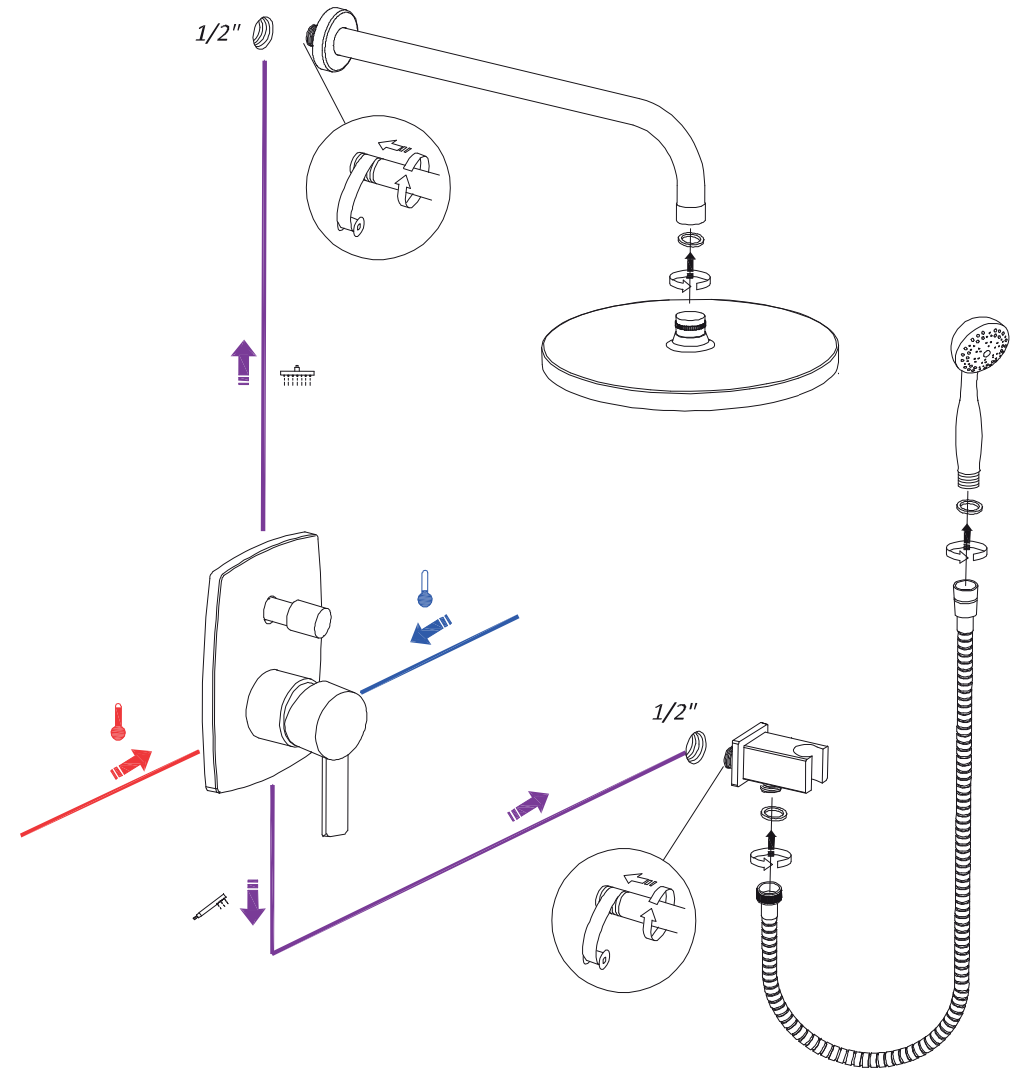
MONTAR LA CAJA ICLEVER (1) Y COMPROBAR
LOS NIVELES RESPECTO LA PARED
FIX THE ICLEVER BOX (1) AND ADJUST THE
LEVELS WITH REGARD TO THE WALL

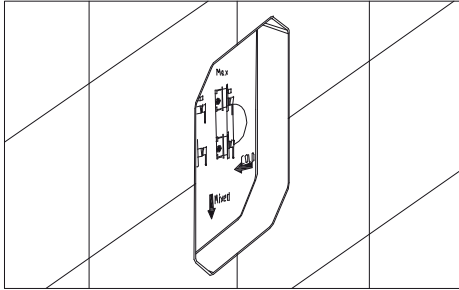


CONECTAR LOS TUBOS DE ENTRADA
Y LOS DE SALIDA
CONNECT THE WATER PIPES INLETS
AND WATER PIPES OUTLETS



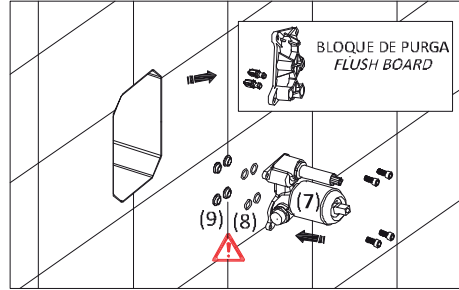
MONTAR LOS 2 SOPORTES (9) SI LA PARED NO ES
SÓLIDA. FIJAR LA CAJA ICLEVER MEDIANTE TORNILLOS
ASSEMBLE 2 SUPPORTS (9) IF THE ISN'T SOLID
FIX THE ICLEVER BOX WITH SELF TAPPING SCREWS





ESTA GRIFERÍA SOLAMENTE PUEDE SER INSTALADA UNA VEZ SE HAYA INSTALADO LA CAJA. PARA LA INSTALACIÓN DE DICHA CAJA, CONSULTE LA GUÍA DE INTSALACIÓN DE LA CAJA

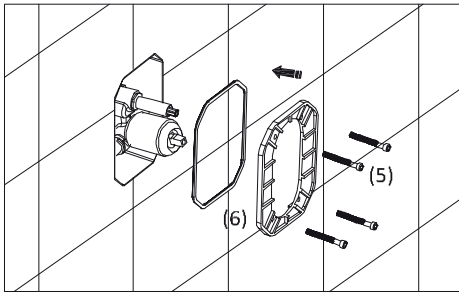
THIS CONTROL VALVE CAN BE INSTALLED ONLY ONCE THE BOX HAS BEEN INSTALLED. FOR THE INSTALLATION OF THE BOX, PLEASE REFER THE INSTALLATION GUIDE



CERRAR EL SUMINISTRO DE AGUA Y QUITAR EL BLOQUE DE PURGA Y TAPONES. COLOCAR LA GRIFERÍA (7) DENTRO DE LA CAJA Y ROSCARLA MEDIANTE LOS 4 TORNILLOS QUE SUJETABAN EL BLOQUE DE PURGA - SACAR LAS PROTECCIONES (9) Y ASEGURARSE QUE LAS 4 JUNTAS (8) ESTÁN MONTADAS EN LA BASE DE LA VÁLVULA

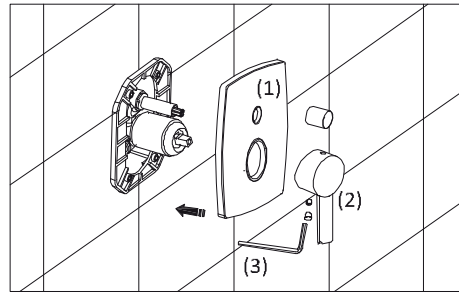


STOP THE WATER SUPPLY AND DISSASSEMBLE THE FLUSH BOARD AND PLUGS. PUT THE CONTROL VALVE BODY(7) INTO THE BOX AND FIX IT BY TIGHTENING THE 4 SCREWS WHICH WERE ASSEMBLED BEFORE
 - TAKE OUT THE O-RING PROTECTIONS (9) AND MAKE SURE THE 4 SEALING O-RING (8) ARE ASSEMBLED



COLOCAR EL PLAFÓN DE SELLADO CON SU JUNTA (6) Y FIJARLA CON LOS 4 TORNILLOS ALLEN (5). ASEGURARSE QUE EL PLAFÓN (6) ESTÉ BIEN POSICIONADO ANTES DE APRETAR LOS 4 TORNILLOS (5)

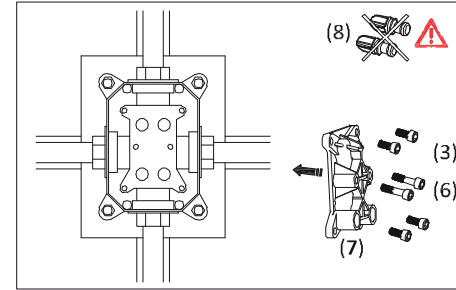
PUT THE PLASTIC GASKET WITH THE SEALING RING (6) AND FIX IT WITH 4 ALLEN SCREWS (5). PLEASE ADJUST THE PLASTIC GASKET (6) IN THE RIGHT POSITION BEFORE TIGHTENING THE SCREWS (5)



COLOCAR EL FLORÓN CROMADO (1) Y LA MANETA (2) MEDIANTE LA LLAVE ALLEN (3). FINALMENTE MONTAR EL ÍNDICE Y POMO (4)

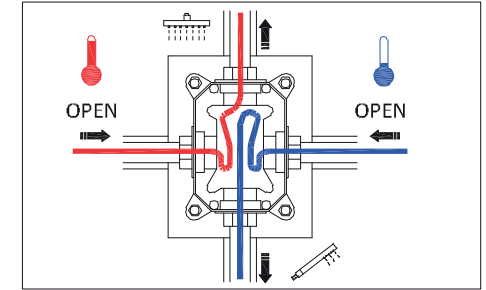
INSTALL THE CHROME PLATE (1) AND HANDLE SET (2) BY TIGHTENING THE SMALL ALLEN SCREW. FINALLY PUT THE INDEX AND KNOB (4) FOR 2 OUTLETS VALVE, ALSO ASSEMBLE

COMPROBACIÓN FUGAS TESTING PROCEDURE



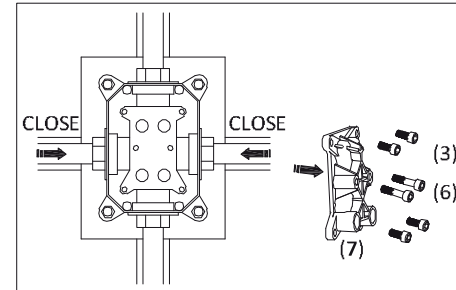
MONTAR EL BLOQUE DE PURGA (7) MEDIANTE LOS TORNILLOS (3) (6)

ASSEMBLE THE FLUSH BOARD (7) BY THE SCREWS (3) (6)



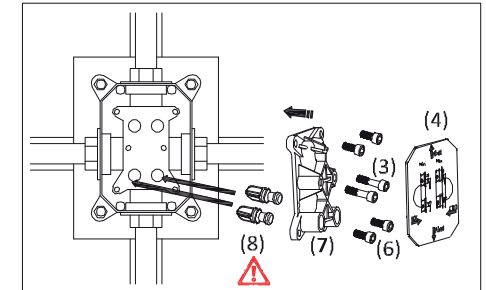
ABRIR EL SUMINISTRO DE AGUA FRIA Y CALIENTE Y COMPROBAR QUE NO HAYA NINGUNA FUGA EN LAS CONEXIONES REALIZADAS

OPEN THE WATER SUPPLY AND CHECK THERE ISN'T LEAKING FROM ANY OUTLET CONNECTION PART



CERRAR EL SUMINISTRO DE AGUA Y SACAR EL BLOQUE DE PURGA (7)

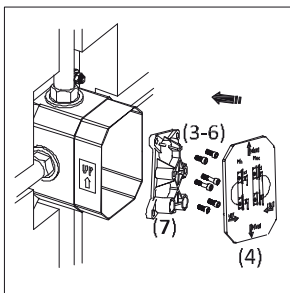
CLOSE THE WATER SUPPLY AND REMOVE THE FLUSH BOARD (7)



VOLVER A MONTAR EL BLOQUE DE PURGA (7), PERO ESTA VEZ CON LOS TAPONES (8) DENTRO. PONER LA PROTECCIÓN (4) CAJA PREPARADA PARA EL SIGUIENTE PASO: SELLADO DE PARED

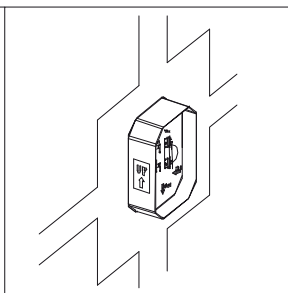
ASSEMBLE AGAIN THE FLUSH BOARD (7), THIS TIME WITH THE SEALING PLUG (8) INSIDE PUT THE PROTECTION (4).
 ICLEVER BOX READY FOR THE NEXT STEP: SEALING WALL

SELLADO DE PARED
SEALING WALL



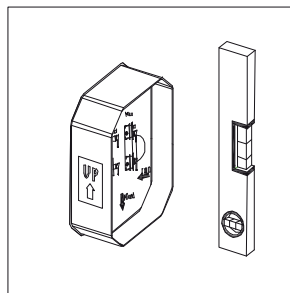
DEJAR MONTADO EL BLOQUE DE PURGA (7),
LOS 6 TORNILLOS (3-6) Y LA PROTECCIÓN (4)

MUST BE ASSEMBLED THE SEALING BOARD (7)
THE 6 SCREWS (3-6) AND PROTECTION (4)



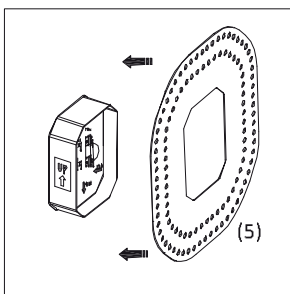
ASEGURARSE QUE NO HAN EXISTIDO
FUGAS INTERNAS Y SELLAR CON CEMENTO

MAKE SURE THERE ISN'T INNERLEAKING
AFTER TESTING AND SEAL WITH CEMENT



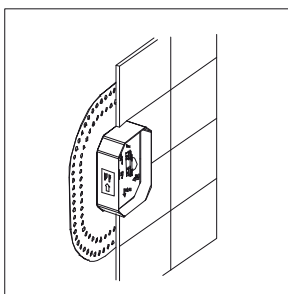
COMPROBAR NIVELES RESPECTO PARED
DESPUÉS DE SELLAR CON CEMENTO.

ADJUST THE LEVELS OVER THE WALL
AFTER SEALING WITH CEMENT



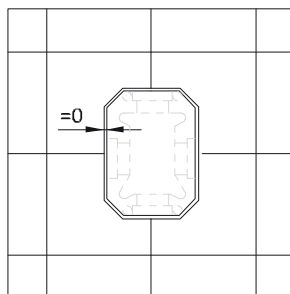
PEGAR LA JUNTA PARA TABIQUES (5)
ALREDEDOR DE LA CAJA ICLEVER

GLUE THE RUBBER WALL SEAL (5)
AROUND THE ICLEVER BOX



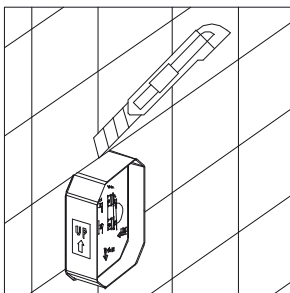
AZULEJOS: AJUSTARLOS AL MÁXIMO
RESPECTO AL PERFIL DE LA CAJA ICLEVER (*)

TILE: TRY TO NARROW THE GAP
WITH REGARD TO ICLEVER BOX PROFILE (*)



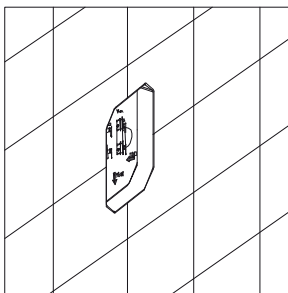
(*) ES MUY IMPORTANTE PARA CUANDO
VAYAMOS A MONTAR EL GRIFO

(*) IT'S CRITICAL FOR INSTALLING
THE CONTROL VALVE LATER



REALIZAR EL CORTE DEL PERFIL
SOBRANTE DE LA CAJA ICLEVER

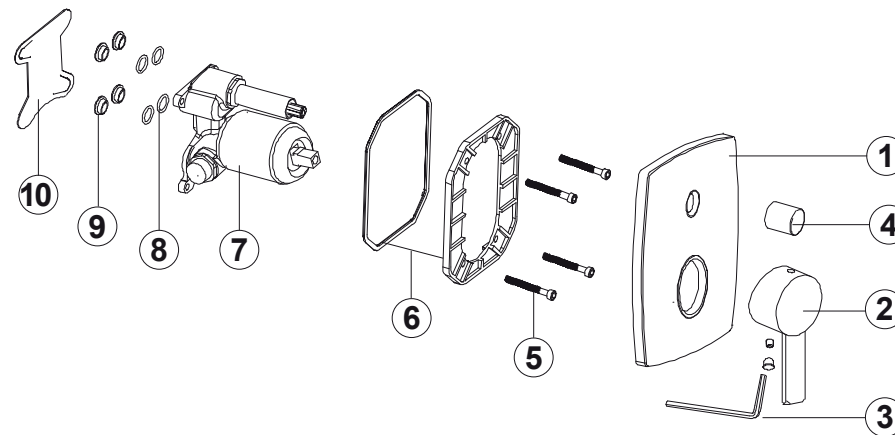
CUT THE PROTRUDING PART OF
THE ICLEVER BOX



INSTALACIÓN DE LA CAJA ICLEVER FINALIZADA
PREPARADO PARA EL MONTAJE DEL GRIFO

HAVE FINISHED THE ICLEVER BOX INSTALLATION
READY TO ASSEMBLE CONTROL VALVE

2. VÁLVULA MONOMANDO
2. SINGLE LEVER VALVE



Nr.	DESCRIPCIÓN DESCRIPTION	CANT. QTY.
1	FLORÓN CROMADO CHROMED PLATE	1
2	CONJUNTO MANETA HANDLE SET	1
3	LLAVE HEXAGONAL ALLEN HEXAGONAL ALLEN KEY	2
4	POMO INVERSOR DIVERter KNOB	1
5	TORNILLO ALLEN M5 ALLEN SCREW M5	4
6	PLAFÓN DE SELLADO SEALING PLASTIC GASKET	1
7	CUERPO GRIFERÍA CONTROL VALVE BODY	1
8	JUNTA TÓRICA O-RING	4
9	PROTECCIÓN JUNTA TÓRICA O-RING PROTECTION	1
10	PROTECCIÓN PROTECTION	1